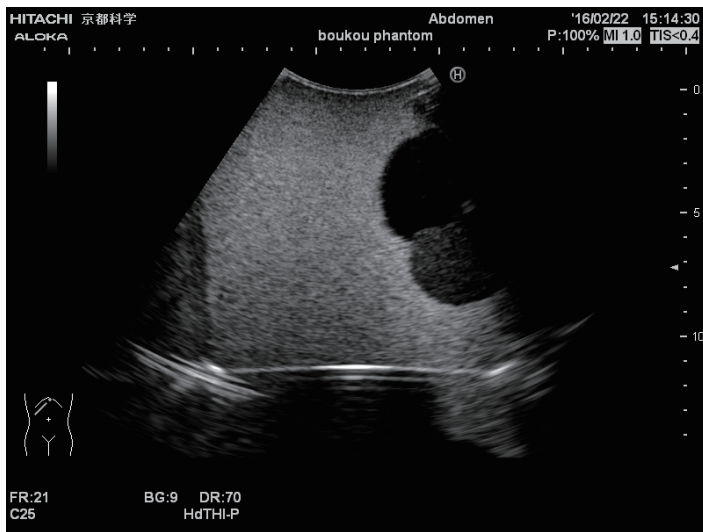
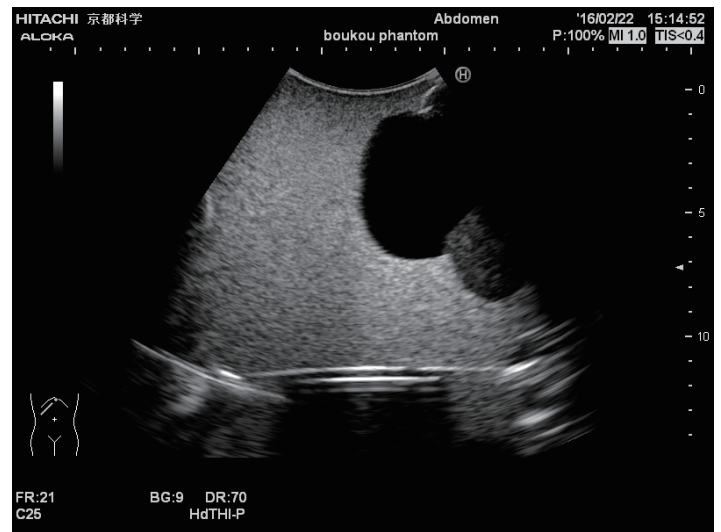


# US-16 Intravesical Urine Volume Measurement Training Simulator



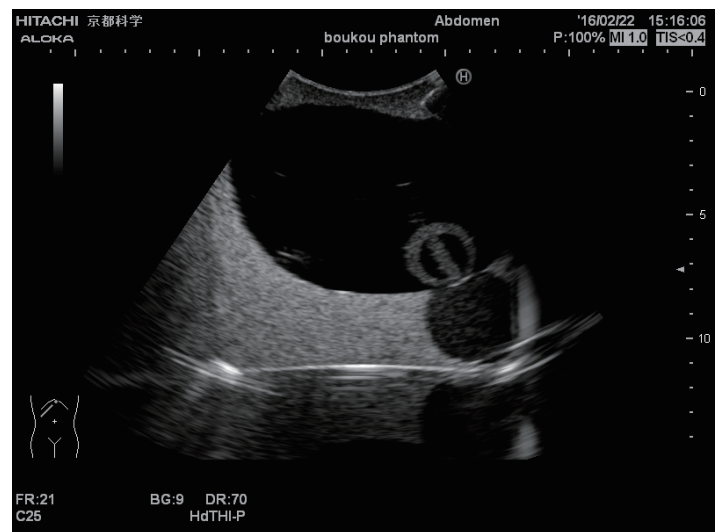
urine volume: 50ml



urine volume: 150ml



urine volume: 300ml



urinary retention+ balloon catheter

 **KYOTO KAGAKU co.,LTD**

Specifications are subject to change without our prior notice.

For the latest information and further details, check our website [www.kyotokagaku.com](http://www.kyotokagaku.com),

follow us on **Facebook** [www.facebook.com/kyotokagaku](http://www.facebook.com/kyotokagaku) or **contact us at** [rw-kyoto@kyotokagaku.co.jp](mailto:rw-kyoto@kyotokagaku.co.jp)

Reproducing all or any part of the contents is prohibited without the Kyoto Kagaku's permission.