

Quick Rack System

Storage Solutions for Healthcare



solairé
M E D I C A L

Quick Rack System

Storage Solutions for Healthcare

An efficient, flexible storage system for supplies and storage locations of all sizes.

Quick Rack’s modular design offers nearly unlimited flexibility to customize units to meet specific supply storage and space requirements. The open design keeps identification of and access to supplies quick and easy. Quick Rack is a perfect solution for storage of lower-cost supplies in general supply storage areas. It’s also a cost-effective solution for storage of high-value supplies stored in limited access, locked rooms.

The Quick Rack system starts with a base unit, which can be extended with any number of add-on units. Units are both stationary and mobile and come in two widths, two heights, and two depths. Quick Rack’s accessories can be arranged and rearranged easily on the frame. Accessories are compatible with the InnerSpace® by Solaire Medical portfolio.

Quick Rack Structure 3

Quick Rack Accessories 7

QUICK! RACK

Quick Rack Structure – 17.5"-Deep Units

Stationary Base Unit (SK1727SS)

Aluminum frame adjusts in 2.5" intervals and can be configured for angled or horizontal storage. Includes 4 adjustable feet with protective sides. Weight capacity: 880lbs
Dimensions – 27.5"w x 17.5"d x 76.5"h



Stationary Add-On Unit (SK1727SA)

Aluminum add-on frame adjusts in 2.5" intervals and can be configured for angled or horizontal storage. Includes 2 adjustable feet with protective sides. Weight capacity: 880lbs
Dimensions – 25.5"w x 17.5"d x 76.5"h



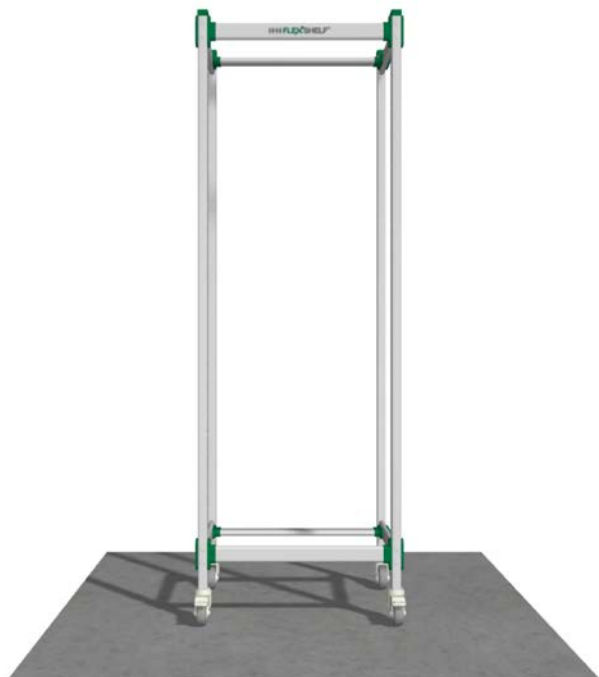
Shown with base and add-on unit

QUICK! RACK

Quick Rack Structure – 17.5"-Deep Units

Mobile Base Unit (SK1727MS)

Aluminum frame adjusts in 2.5" intervals and can be configured for angled or horizontal storage. Includes 4 3" casters, 2 with locking brakes. Weight capacity: 880lbs
Dimensions – 27.5"w x 17.5"d x 80"h



Mobile Add-On Unit (SK1727MA)

Aluminum add-on frame adjusts in 2.5" intervals and can be configured for angled or horizontal storage. Includes 2 3" casters, 1 with locking brake. Weight capacity: 880lbs
Dimensions – 25.5"w x 17.5"d x 80"h



Shown with base and add-on unit

QUICK! RACK

Quick Rack Structure – 25.5"-Deep Units

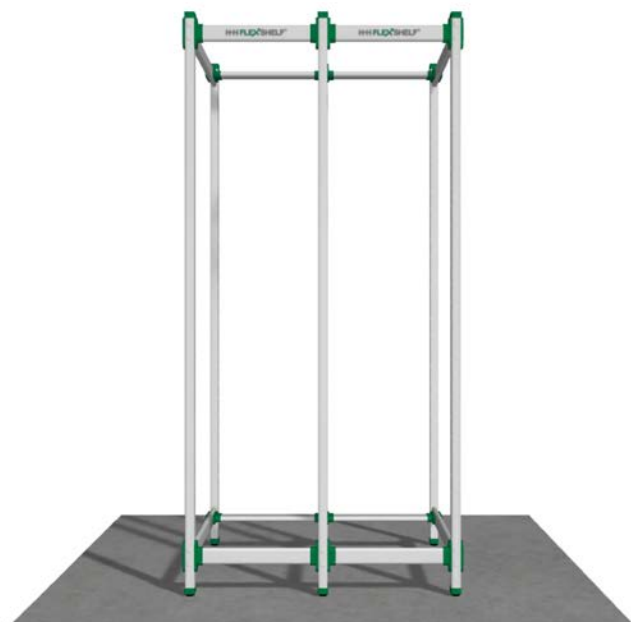
Stationary Base Unit (SK2519SS)

Aluminum frame adjusts in 2.5" intervals and can be configured for angled or horizontal storage. Includes 4 adjustable feet with protective sides. Weight capacity: 880lbs
Dimensions – 19.5"w x 25.5"d x 76.5"h



Stationary Add-On Unit (SK2519SA)

Aluminum add-on frame adjusts in 2.5" intervals and can be configured for angled or horizontal storage. Includes 2 adjustable feet with protective sides. Weight capacity: 880lbs
Dimensions – 17.5"w x 25.5"d x 76.5"h



Shown with base and add-on unit

QUICK! RACK

Quick Rack Structure – 25.5"-Deep Units

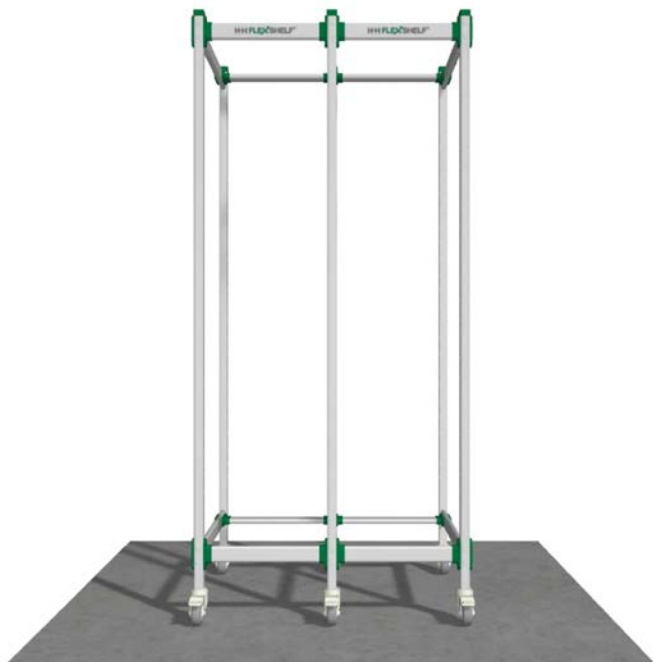
Mobile Base Unit (SK2519MS)

Aluminum frame adjusts in 2.5" intervals and can be configured for angled or horizontal storage. Includes 4 3" casters, 2 with locking brakes. Weight capacity: 880lbs
Dimensions – 19.5"w x 25.5"d x 80"h



Mobile Add-On Unit (SK2519MA)

Aluminum add-on frame adjusts in 2.5" intervals and can be configured for angled or horizontal storage. Includes 2 3" casters, 1 with locking brake. Weight capacity: 880lbs
Dimensions – 17.5"w x 25.5"d x 80"h



Shown with base and add-on unit

Quick Rack Accessories

Slide Rails and Angled Rails

Trays, baskets, and shelves attach to the Quick Rack unit with slide and angled rails. Slide rails hold accessories horizontally; angled rails tilt accessories 25° for convenient and comfortable access. Select rails to match the width and depth of the unit. Include attachment hardware and come in a set of 2 rails



For 19.5"w x 25.5"d unit

SKSR-25	Slide Rail
SKASR-25	Angled Rail

For 27.5"w x 17.5"d unit

SKSR-17	Slide Rail
SKASR-17	Angled Rail

Shelves

Shelves are designed for general use and to hold cath managers. Basic metal shelf holds up to 25lbs. Metal shelf for cath managers holds 50lbs



Basic Metal Shelf – for 25.5"d unit

S27S1	15.75"w x 23.75"d
-------	-------------------

Basic Metal Shelf – for 17.5"d unit

S19S1	23.5"w x 16"d
-------	---------------

Metal Shelf for Cath Manager – for 25.5"d unit

S27M1	15.75"w x 23.75"d
-------	-------------------

Metal Shelf for Cath Manager – for 17.5"d unit

S19M1	23.5"w x 16"d
-------	---------------

Shelf Dividers

5"-high adjustable and removable metal dividers fit anywhere on a shelf



For 25.5"d unit

S27DI	Adjustable Shelf Divider
-------	--------------------------

For 17.5"d unit

S19DI	Adjustable Shelf Divider
-------	--------------------------

Quick Rack Accessories

Cath Managers

7- and 9-hook cath managers can be adjusted horizontally along shelf. Each inline hook holds 10-15 catheter packages and includes product labeling. Shelves are not included with cath managers



For 25.5"d unit

S9CM 9-Hook Cath Manager

For 17.5"d unit

S7CM 7-Hook Cath Manager

Trays

Seamless ABS plastic construction enables thorough cleaning of trays; integrated safety stops prevent trays from sliding out of unit. Trays can be organized using adjustable tray dividers. Dividers can be ordered with tray or separately. Holds up to 40lbs



ST2 2" Grey Tray

STD2 2" Grey Preconfigured Tray with 3 Short and 2 Long Dividers

ST4 4" Grey Tray

STD4 4" Grey Preconfigured Tray with 3 Short and 2 Long Dividers

ST8 8" Grey Tray

STD8 8" Grey Preconfigured Tray with 1 Short and 1 Long Divider

SCT2 2" Clear Tray

Baskets

Perforated ABS plastic bottoms and sides keep dust out of baskets; include integrated safety stops that prevent basket from falling out of unit. Baskets can be organized using adjustable dividers; order separately. Holds up to 40lbs



SB4 4" Clear Basket

SB8 8" Clear Basket

QUICK! RACK

Quick Rack Accessories

Tray Dividers

Tray dividers divide and organize tray interiors for the storage of smaller supplies. Short dividers fit horizontally in trays; long dividers fit vertically. Multiple dividers can be used in trays



For 2" grey tray

SLD2	Long Tray Divider	SSD2	Short Tray Divider
------	-------------------	------	--------------------

For 4" grey tray

SLD4	Long Tray Divider	SSD4	Short Tray Divider
------	-------------------	------	--------------------

For 8" grey tray

SLD8	Long Tray Divider	SSD8	Short Tray Divider
------	-------------------	------	--------------------

For use with 2" clear tray

SCLD2	Long Tray Divider	SCSD2	Short Tray Divider
-------	-------------------	-------	--------------------

Basket Dividers

Clear basket dividers divide baskets to organize interiors for the storage of smaller supplies. Multiple dividers can be used in baskets



For 4" basket

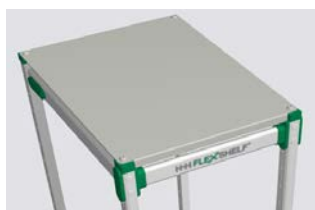
SBD4	Clear Basket Divider
------	----------------------

For 8" basket

SBD8	Clear Basket Divider
------	----------------------

Top Panels

Top panels fit over the top of a unit to cover and protect unit contents from dust



For 25.5"d unit

SKDC-25	Top Panel
---------	-----------

For 17.5"d unit

SKDC-17	Top Panel
---------	-----------

Tray Lid

Solid grey plastic lid fits on top of a tray to cover and protect tray contents. Does not require attachment



STL	Tray Lid
-----	----------

Label Holder

Label holder clips onto the front of trays and baskets to hold 2" x 3.5" cards. Comes in package of 10 holders



SLH35	Clear Label Holder
-------	--------------------

Quick Rack System

Storage Solutions for Healthcare



Evolve Cabinets | Evolve Casework | Roam Supply Carts | Rover Workstations | Tempo Procedure Carts | Quick Open Storage

Solaire Medical specializes in storage solutions for all areas of your healthcare facilities. We offer the InnerSpace® portfolio of products, a cohesive system of carts, cabinets, and modular casework that improves staff and facility efficiency and an organization's bottom line. Our InnerSpace portfolio is supplemented with the Quick line of open storage products.

When you purchase InnerSpace by Solaire Medical products, you're buying products made in the U.S.A. and from a direct manufacturer that delivers on-time and error-free. The portfolio's 5-year warranty is our promise to you that our products and service are of the highest quality.

The Quick family of open storage products has a one-year warranty.

Contact our service team with your requests or to connect with a sales representative. We're here to help you specify the best storage products for your needs, whether a standard option or customized solution. We offer complimentary storage analysis, design services, CAD support, and logistics and installation assistance.

Call to schedule a free storage consultation.

solaire
MEDICAL

Solaire Medical | P.O. Box 2808 | Grand Rapids, Michigan 49501
888-435-2256 phone | 616-743-5944 fax | solairemedical.com

© 2019 Solaire Medical, Grand Rapids, MI 49501
© InnerSpace is a registered trademark of Solaire Medical, Grand Rapids, MI 49501
0319



InnerSpace
PORTFOLIO OF PRODUCTS