



# Imaging and Skin Markers

Save time, improve accuracy, enhance communication and provide a better patient experience with Beekley Medical's simple, innovative medical products. This product line consists of a broad range of radiologic skin markers, biopsy and patient care devices for mammography; breast biopsies; radiation therapy; MRI; CT scans and general radiology.

your single source supplier





# Table of Contents

Conventional Simulation Skin Markers	5
Mammography Skin Markers	7
CT Scan Skin Markers	16
MRI Spots	18
Aroma Tabs	20
Radiation Therapy	22
Order Form	23



Australia's largest and most trusted single source supplier of medical imaging products and accessories.

### The Imaging Solutions experience

When people or organisations come into contact with Imaging Solutions, customers, suppliers and employees alike enjoy a consistent and positive experience that promotes a positive outlook, successful outcome and loyalty over the long-term.

### Gain access to the world market leaders while enjoying local support

Imaging Solutions has partnered with over 50 world leading brands to bring you the most comprehensive platform of medical imaging products in Australia. All our supplier partners are selected on the criteria of being the best-in-class of their area of expertise. Meaning, with Imaging Solutions, you have access to the very best the world market has to offer and the peace of mind knowing that a locally run organisation can support you if something goes wrong.

**PHILIPS**



**BEEKLEY**

**MAVIG**

**BIODEX**

**LAUREL BRIDGE**

**InnerSpace**

**SUN NUCLEAR**  
corporation

**soyee**  
PRODUCT INC.

**KYOTO KAGAKU co.,LTD**  
Manufacturer and developer of educational models



**TA**  
Techno-Aide



**CODONICS**

### Our history

Imaging Solutions boasts a proud history. Established in 1992, the company expanded its core distribution business through the acquisition of a number of bolt-on enterprises such that combined, the organisation has over 45 years of history in supporting the Australian and New Zealand medical imaging industry.

### Support Australian manufacturing

Imaging Solutions manufactures a range of products in Australia where ever we can add value to our customers in doing so. The RadSafe brand of radiation protection aprons and accessories is just one example of a range that is designed and made in Brisbane, Australia at our world class manufacturing facility. Imaging Solutions also manufactures positioning aids, sandbags, portable radiation protection screens or more. We also design and manufacture turnkey MRI/RF cage and scan rooms.



### Australia's widest range of imaging products

It would be difficult to walk through a radiology department and not recognise products from Imaging Solutions in every corner. From positioning aids to diagnostic displays, there is no more complete and comprehensive range of products anywhere in the country. Imaging Solutions is your single source supplier.

your single source supplier

### Expert knowledge

Imaging Solutions has been servicing the medical imaging industry for decades. Coupled with our connections to world leading manufacturers and industry experts, Imaging Solutions is well positioned to provide you best practice knowledge and assist you in delivering exceptional imaging outcomes to your patients and customers.

### Unrivalled customer satisfaction

Our friendly and knowledgeable customer service team is ready and waiting to help you with whatever your need may be. Call us on the phone or send through an e-mail and our team will go out of their way to ensure you receive a helpful and timely response.

For the most up to date information visit us online at  
[www.imagingsol.com.au](http://www.imagingsol.com.au)



# About Beekley Medical

## History and Mission

Founded in 1934, Beekley Corporation has evolved into the world leading supplier of simple innovative medical products that help imaging, surgical, and radiation therapy professionals save time, improve accuracy, enhance communication and provide a better patient experience.

Beekley introduced the X-SPOT®, the first ever professional skin marker for diagnostic imaging in 1984. The X-SPOT® replaced a variety of makeshift methods used at the time for communicating an area of concern on film. It quickly became a staple in radiology departments across the country and its quick adaption in all radiology modalities led Beekley to devote itself to the research and development of simple, low cost, disposable products that would help imaging professionals improve communication, productivity and patient care.

Today, Beekley Medical's product line has grown to include a broad range of radiologic skin markers, biopsy and patient care devices for Mammography; Breast Biopsy; Radiation Therapy; MRI; CT-Scan and General Radiology.

## Manufacturing Standards

Beekley is FDA registered and ISO 13485:2003 certified. We maintain strict manufacturing standards with a strong commitment to excellence and customer satisfaction.

All Beekley products are:

- 100% guaranteed to perform as promised
- Lead-free, latex-free and hypo-allergenic

Beekley supports the fight against breast cancer by helping to fund research, prevention and early detection programs. A portion of the proceeds from the sale of Beekley SPOTS for mammography is donated to local and national breast cancer foundations to achieve these end.



Committed to the fight for the cure...





# Breast Health / Mammography

## Bella Blankets® Protective Coverlets for Mammography

Capture more breast tissue with Bella Blankets® protective coverlets.1 Thin by design, Bella Blankets® allows technologists to position patients as close to the chest wall as possible. Textured material helps with “hard to position” breasts, prevents breasts from sticking to receptor plate to avoid skin tears, helps shield cuts or infections in the inframammary fold, and acts as a sanitary barrier.

Vertical Channel Technology™ (only from Beekley Medical®) allows air to push out and release upon application, reducing air bubbles. Easy-lift PIK-UP™ tab allows for easy removal of Bella Blankets® from the receptor plate without leaving residue.

Bella Blankets®

50/box

- 22.9cm x 27.9cm,
- intended for use on 18cm x 24cm receptor plate

Bella Blankets      BE1-310



Bella Blankets®

50/box

- 29.2cm x 33.0cm,
- intended for use on 24cm x 30cm receptor plate

Bella Blankets      BE1-311

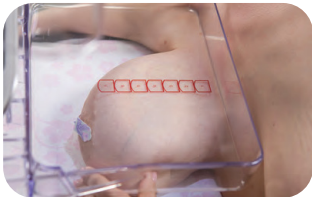


Vertical Channel Technology™



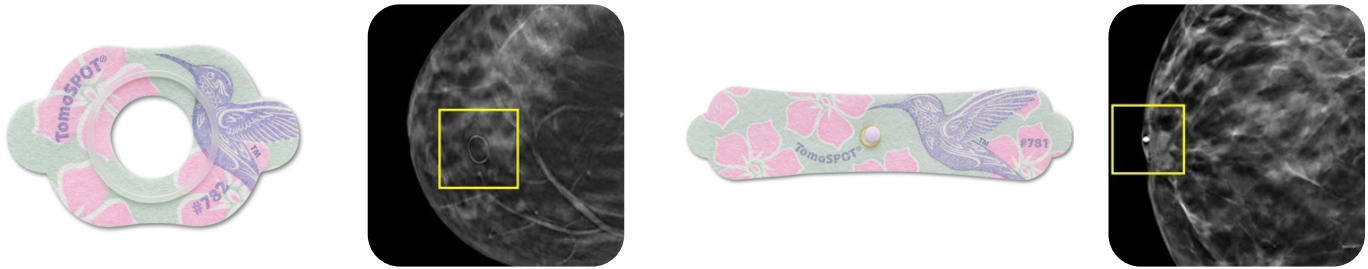
Easy-lift PIK-UP™ tab

Using Bella Blankets® aligns with proper positioning initiatives to support MQSA’s EQUIP guidelines. Bella Blankets®’ FDA 510(k) clearance applies to all mammography imaging equipment. Using Bella Blankets® during a mammogram is essentially the same average glandular dose as no coverlet on the receptor plate.2



# TomoSPOT® for Digital Breast Tomosynthesis

Distinctly identify and permanently document nipples, moles, scars, palpable masses, and areas of pain or concern on mammographic images with Beekley® SPOT® skin markers for mammography. The result is clear communication between patient, technologist, and radiologist regarding areas of interest and more precise interpretation of the mammogram.



## TomoSPOT® for marking moles 782

- 1mm low density, see-through ring
- pinch-free material
- designed for use with 3D breast tomosynthesis equipment

Contents per box: 54

TomoSPOT® for marking moles

BE1-782

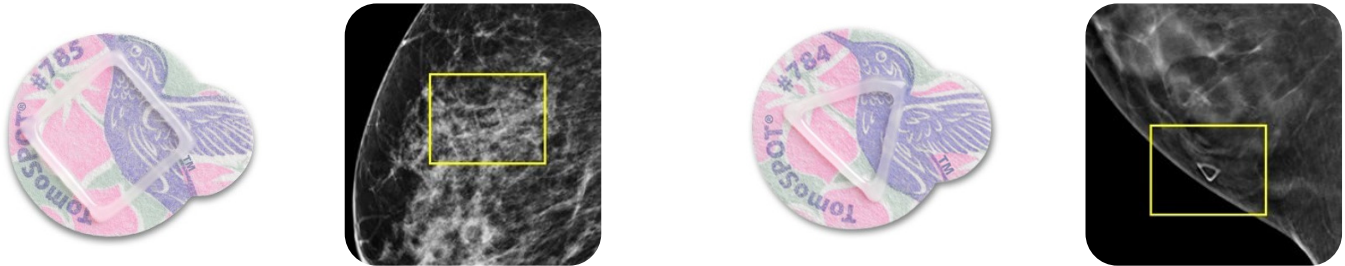
## TomoSPOT® for marking nipples 781

- 2.3mm non-metallic pellet
- pinch-free material with adhesive-free center
- designed for use with 3D breast tomosynthesis equipment

Contents per box: 58

TomoSPOT® for marking nipples

BE1-781



## TomoSPOT® for marking non-palpable areas of concern / pain marker 785

- low density see-through square
- pinch-free material
- designed for use with 3D breast tomosynthesis equipment

Contents per box: 58

TomoSPOT® for marking non-palpable areas

BE1-785

## TomoSPOT® for marking palpable masses 784

- low density see-through triangle
- pinch-free material
- designed for use with 3D breast tomosynthesis equipment

Contents per box: 116

TomoSPOT® for marking palpable masses

BE1-784

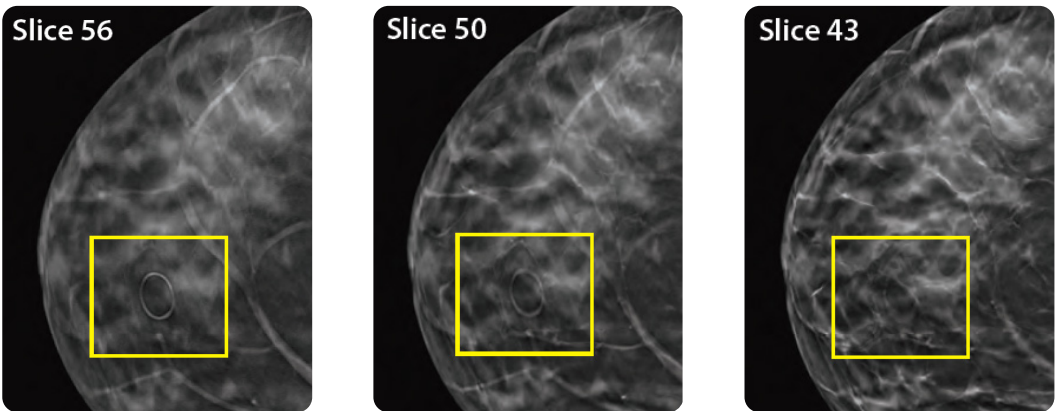


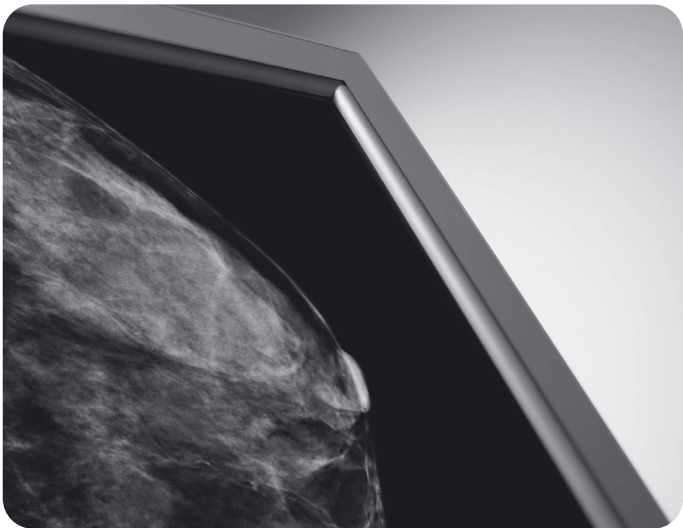
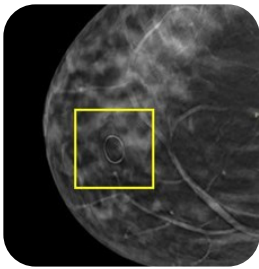
Figure 1 – Slice 56 shows mole marker at its clearest resolution.

Figure 2 – Slice 50 shows mole marker beginning to fade when scrolling through the tomosynthesis dataset slices.

Figure 3 – Slice 43 is the point at which the mole marker is no longer visible.

# Mole Markers

Provide certainty that densities on mammographic images highlighted by the O-shaped marker are moles and not areas of concern.



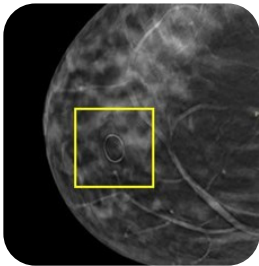
## TomoSPOT® for marking moles 782

- 1mm low density, see-through ring
- pinch-free material
- designed for use with 3D breast tomosynthesis equipment

Contents per box: 54

TomoSPOT® for marking moles

BE1-782



Marking every patient, every time with O-SPOTS® Mole Markers reduces the risk of misdiagnosis by clearly identifying moles and other types of skin lesions.

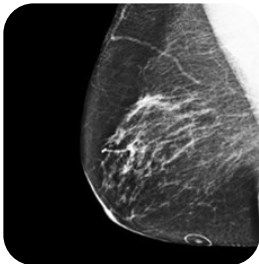
## O-SPOT® Light Image® Soft 'n Stretchy® 691

- 1mm uniform low-density see-through ring
- pinch-free material
- compatible with both digital and analog equipment

Contents per box: 55

O-SPOT® Light Image® Soft 'n Stretchy® 691

BE1-691



## O-SPOT® 609

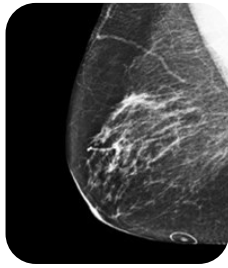
- 1.6mm semi-radiolucent ring
- burnout-resistant brighter image
- for use with analog equipment

Contents per box: 58

O-SPOT® 609

BE1-609





## O-SPOT® Designed for Digital® Soft 'n Stretchy®

- 1mm uniform ultra-sheer see-through ring
- pinch-free material
- designed for use with the most sensitive digital equipment

Contents per box: 55

Florals™ order code

BE1-791

## O-SPOTS® Light Image™ Soft 'n Stretchy™

- 1 mm uniform low-density see-through ring
- Pinch-free™ material

Contents per box: 55

Florals™ order code

BE1-691



## Why Use O-Shaped Mole Markers?

Have you ever encountered a situation where a suspicious area showed up on a patient's film and you called the patient back for a diagnostic work-up, only to discover that the "suspicious area" was really a mole?

Would you like a more effective way to decrease the need for costly, time consuming additional views while providing a higher standard of care for your patients?

On mammograms, moles frequently present problems when they appear to mimic a new mass and possibly even a cancer. Many mammographers note the presence of moles on the breast diagram, but this fails to take into consideration that the shape of the breast is altered by compression. Raised moles image about 10% of the time and you never know when. They often image on one view and not the other and may image one year and not the next.

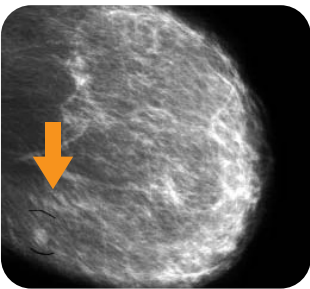
## Reduce Risk

Marking every patient, every time with O-SPOTS® Mole Markers reduces the risk of misdiagnosis by clearly identifying moles and other types of skin lesions. Routine use of a mole marker the first time, every time in either analog or digital mammography, can clarify the questions presented by skin lesions mimicking pathology.

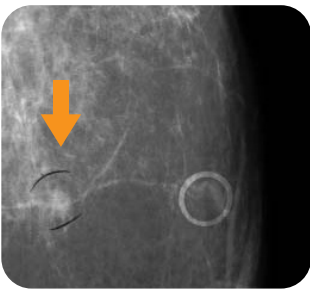
## Adopting a Mole Marking Protocol Can:

- Clarify questions and increase communication
- Eliminate unnecessary costly, time consuming additional views or repeats
- Save Radiologist reading time
- Reduce risk of misdiagnosis
- Relieve the patient of considerable anxiety
- In the worst case, prevent an unnecessary biopsy
- Provide permanent documentation for future reference wherever the patient's films travel

# Case Presentations



On this MLO standard view, a nodule appears in the deep inferior left breast.



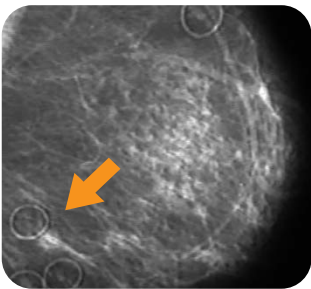
This MLO spot compression additional view taken with mole marker in place clarifies that the nodule is not the skin mole.

## Case 1: Analog Study

A 60 year old woman presented for bilateral screening mammography. This study demonstrates a nodule in the deep inferior left breast that was questioned by the Radiologist on the standard view.

An MLO spot compression view of the left breast was performed with a mole marker in place. It indicates that the mammographic finding does not represent a skin mole. Accordingly, this prompted the performance of a left breast ultrasound and subsequently, a core biopsy that confirmed "Invasive Ductal Carcinoma".

In this case, the mole did not image on the standard view and therefore the nodule could have been mistaken for the mole. Marking the mole on the standard view would have immediately clarified that the density was not the mole.



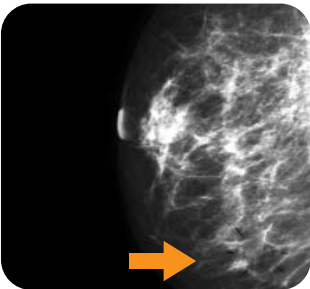
A follow-up exam - MLO standard view with ALL moles marked with Beekley O-SPOTS identifies a parenchymal density that had previously been disregarded as a mole. It is now clear that this density was not a mole, subsequently biopsied and proved to be a carcinoma.

## Case 2: Analog Study

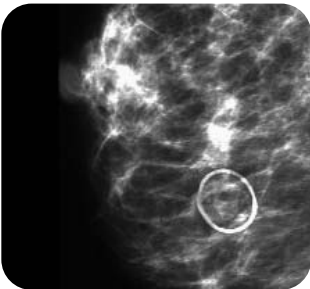
On a previous mammogram, a patient with multiple skin moles had some of the moles marked. No other abnormality was seen at that time. On a follow-up examination at a different facility, the patient had all the skin moles marked with Beekley O-SPOTS®. It is now clear that there's a small parenchymal density between the moles that does not correspond to the mole markers.

This was biopsied and subsequently proved to be a carcinoma. This case demonstrates the importance of marking ALL raised moles. Had this protocol been followed on the previous exam, the parenchymal density would have been identified earlier and reduced the risk for delayed diagnosis.

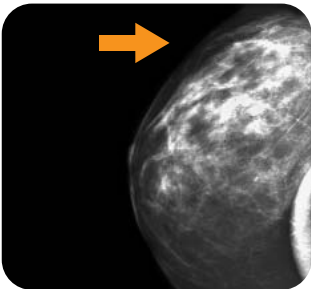
Cases provided by:  
Medical Imaging Centre P. C., Bloomfield, Connecticut  
Lawrence & Memorial Hospital, New London, Connecticut



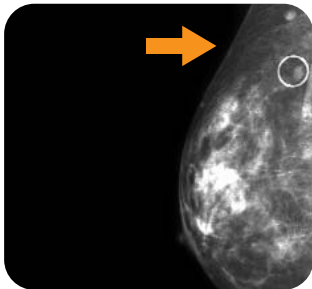
On this MLO standard view, a nodularity is seen projecting over the inferior aspect of the right breast.



An MLO spot compression view of the right breast using mole markers now clarifies that the nodularity is attributable to the skin mole obviating any further evaluation



On this CC standard view, a nodule appears posteriorly in the upper outer quadrant of the right breast.



Modified CC view of right breast taken with a mole marker in place clarifies that the mammographic finding does not represent the skin mole.

## Case 3: Digital Study

A 74 year old woman presented for bilateral screening mammography. This study demonstrates a nodularity projecting over the inferior aspect of the right breast that was questioned by the Radiologist on the standard view.

An MLO spot compression additional view of the right breast utilizing mole markers was performed and indicates that the nodularity was attributable to a skin mole obviating any further evaluation. In this case, the extra view could have been prevented if the mole had been marked for the standard view.

## Case 4: Digital Study

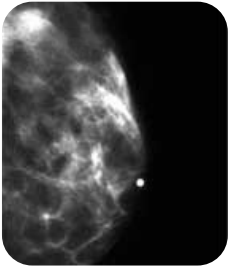
A 78 year old woman presented for bilateral screening mammography. This study demonstrates a nodule posteriorly in the upper outer quadrant of the right breast that was questioned by the Radiologist on the standard view.

A modified CC view performed with a mole marker in place indicates that the mammographic finding does not correlate to a skin mole projecting over the lateral aspect of the breast which then prompted further evaluation. In this case also, marking the mole on the standard view would have immediately distinguished the mole from the nodule and may have prevented the need for the extra view.

# N-SPOTS® Nipple Marker

Immediately identify nipple location on clinical images in mammography. Clinical studies suggest that nipple markers help expedite image critique and interpretation, detect movement, reduce retakes and improve positioning.

Choose the pellet size and density that best suits your needs. Most Beekley nipple markers are available in your choice of Pink or Florals™ (alternating pink and purple backgrounds).



2.5 mm lead-free pellet

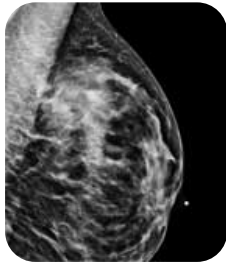
## N-SPOTS® Soft 'n Stretchy

- 2.5 mm lead-free pellet
- pinch-free™ material with adhesive-free center

Contents per box: 94

Pink

BE1-190



2.3 mm non-metallic pellet

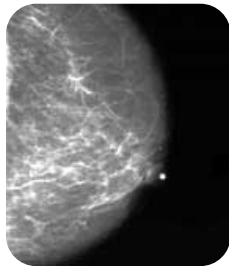
## N-SPOTS® Designed for Digital® Soft 'n Stretchy™

- 2.3 mm non-metallic pellet
- Pinch-free™ material with adhesive-free center
- Perfect for use with digital equipment

Contents per box: 94

Florals™

BE1-790



2.5 mm lead-free pellet

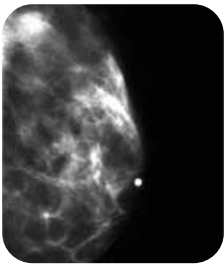
## N-FREE SPOTS®

- 2.5 mm lead-free pellet
- Extended side tabs and adhesive-free center

Contents per box: 110

Florals™

BE1-653



2.0 mm lead-free pellet

## N-FREE SPOTS®

- 2.0 mm lead-free pellet
- Extended side tabs and adhesive-free center

Contents per box: 110

Florals™

BE1-632





Designed for Digital

- Optimally designed for today’s sensitive digital equipment
- Formulated to show brightly but without distraction
- Allows complete visibility of tissue detail



2.3 mm non-metallic pellet

N-FREE SPOTS®  
Designed for Digital®

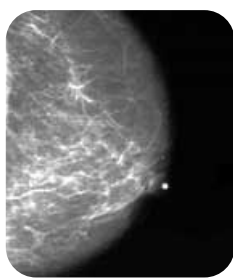
- 2.3 mm lead-free pellet
- Extended side tabs and adhesive-free center
- Perfect for use with digital equipment

Contents per box: 110

Florals™



BE1-732



2.0 mm lead-free pellet

N-SPOTS®

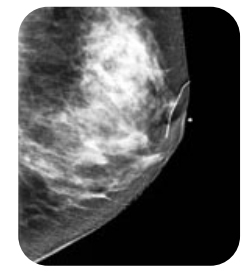
- 2.0 mm lead-free pellet
- Extended side tabs and adhesive-free center

Contents per box: 122

Florals™



BE1-610



1.5 mm lead-free pellet

N-SPOTS®

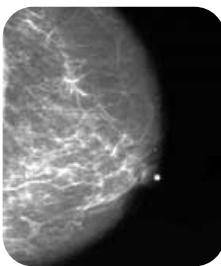
- 1.5 mm lead-free pellet
- Adhesive side tabs

Contents per box: 122

Florals™



BE1-608



2.0 mm pellet

Y-SPOTS®

- 2.0 mm radiopaque pellet
- Easy pik-up™ tab

Contents per box: 132

Green

Florals™



BE1-102

BE1-602



2.3 mm non-metallic pellet



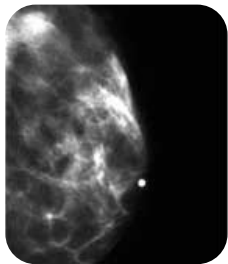
**V-SPOTS®**  
**Designed for Digital®**

- 2.3 mm lead-free pellet
- Easy pik-up™ tab
- Perfect for use with digital equipment

Contents per box: 130

Florals™

BE1-703



2.5 mm lead-free pellet



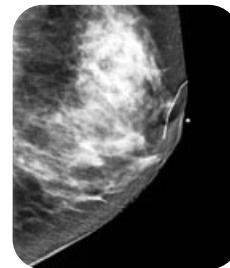
**V-SPOTS®**

- 2.5 mm lead-free pellet
- Easy pik-up™ tab

Contents per box: 130

Florals™

BE1-603



1.5 mm pellet



**X-SPOTS®**

- 1.5 mm radiopaque pellet
- Easy pik-up™ tab

Contents per box: 150

Blue

Florals™

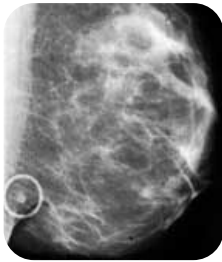
BE1-101

BE1-601

# Light Image Spots

Highlight areas of concern in mammography without fear of obscuring even the tiniest micro-calcification with Beekley's Light Image™ SPOTS® skin markers.

Beekley's exclusive uniform, low-density formula allows complete visibility of any micro-calcifications or other suspicious areas that may lie beneath the marker. Light Image™ SPOTS® are available in skin markers for communicating moles, scars, palpable masses, and areas of concern or pain on mammographic images and in your choice of Pink or Florals™ (alternating pink and purple backgrounds).



See-through mole marker



## O-SPOTS® Light Image™

- Uniform low-density see-through ring
- Highlights without obscuring

Contents per box: 58

Florals™

BE1-652



See-through palpable mass



## A-SPOTS® Light Image™

- Uniform low-density see-through triangle
- Highlights without obscuring
- Compatible with both digital and analog equipment

Contents per box: 120

Florals™

BE1-651



See-through mole marker



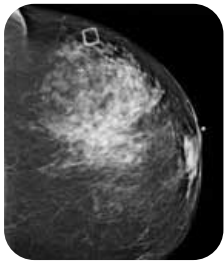
## O-SPOT® Light Image™ Soft 'n Stretchy®

- Soft'n stretchy ring
- Pinch-free material

Contents per box: 58

Pink

BE1-691



See-through square



## Altus™ Light Image™

- Uniform low-density see-through square
- Highlights without obscuring
- Compatible with both digital and analog equipment

Contents per box: 60

Florals™

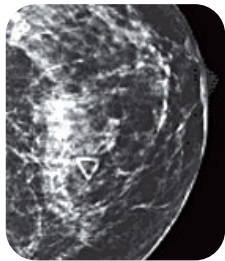
BE1-654



# A-SPOTS® Palpable Mass Markers

Precisely and unmistakably document the location of palpable masses directly on mammographic images with Beekley A-SPOTS® skin markers.

A-SPOTS® palpable mass markers instantly identify symptomatic areas on diagnostic mammograms and provide permanent documentation that a palpable area was noted. Choose the density that best suits your needs. Most Beekley palpable mass markers are available in your choice of Pink or Florals™ (alternating pink and purple backgrounds).



See-through palpable mass

## A-SPOTS® Designed for Digital®

- Uniform ultra low-density see-through triangle
- Perfect for use with digital equipment

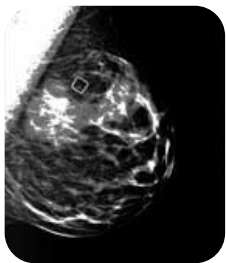
Contents per box: 120

Florals™

BE1-751

# Altus™ Area of Concern or Pain Markers

Clearly communicate areas of concern or focal pain that are not physically manifested with Altus™. Altus™, the newest shape of the Beekley Skin Marking System, clarifies the area marked by a square as different from any other topographic or palpable area of study during interpretation. Choose the density that best suits your needs.



See-through square

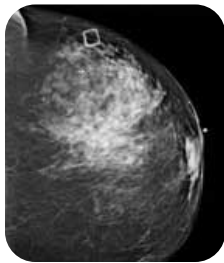
## Altus™ Designed for Digital®

- Uniform, ultra sheer, low-density see-through square
- Perfect for use with sensitive digital equipment

Contents per box: 60

Florals™

BE1-754



See-through square

## Altus™ Light Image™

- Uniform, ultra sheer, low-density see-through square
- Highlights without obscuring
- Compatible with both analog and digital equipment

Contents per box: 60

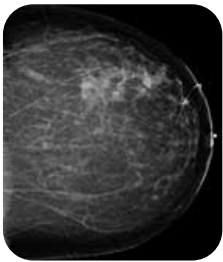
Florals™

BE1-654

# S-SPOTS® Scar Markers

Communicate the exact size, shape, and location of scars and provide an immediate, clear picture of prior breast surgeries with Beekley's S-SPOTS® Scar Markers. S-SPOTS® scar markers help define architectural distortion at the biopsy site by delineating the exact location of incision. Choose the density that best suits your needs. Most Beekley scar markers are available in your choice of Pink or Florals™ (alternating pink and purple backgrounds).

There are three density levels of scar markers to use, making it possible to distinguish older scars from newer scar tissue and also multiple procedures that the patient may have had.



1.0 mm see-through scar

## S-SPOTS® Designed for Digital®

- 1 mm diameter uniform ultra low-density see-through line
- Perfect for use with digital equipment

Contents per box: 327 cm cut to measure roll

Florals™

BE1-750



1.0 mm diameter see-through

## S-SPOTS® Light Image™

- 1 mm diameter uniform low-density see-through line
- Highlights without obscuring

Contents per box: 327 cm cut to measure roll

Pink

BE1-150

Florals™

BE1-650

## Designed for Digital

- Optimally designed for today's sensitive digital equipment
  - Formulated to show brightly but without distraction
  - Allows complete visibility of tissue detail
- The triangular scar markers are flexible and can curve to suit breast surgery scars which are generally in curved shapes. This can save valuable time for the patient, previous techniques included making multiple lengths and then shaping them to suit individual cases.



1.0 mm diameter see-through scar

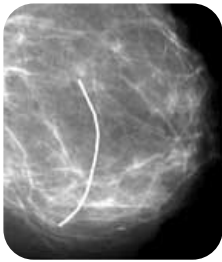
## S-SPOTS® Light Image™ Soft 'n Stretchy™

- 1 mm diameter uniform low-density see-through line
- Pinch-free™ material

Contents per box: 280 cm cut to measure roll

Florals™

BE1-677



.33 mm diameter radiopaque

## S-SPOTS®

- 0.33 mm diameter radiopagueline
- Burnout resistant for brighter image

Contents per box 363 cm cut to measure roll

Pink

BE1-107

Florals™

BE1-607

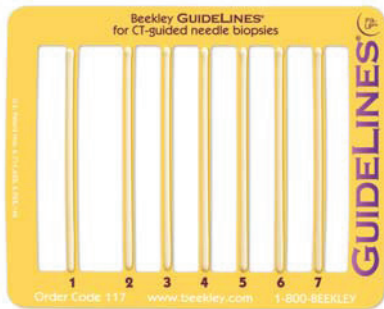


GuideLines® CT Biopsy Grids

Save time and improve accuracy when localizing the needle entry site for a CT-guided biopsy with Beekley Medical's GuideLines®. GuideLines® non-metallic lines offer an artifact-free image and the self-adhesive backing prevents buckling for precise identification of needle entry target. GuideLines® are available in two sizes to accommodate a variety of biopsies.



GuideLines® biopsy grid with seven 2.0 mm diameter non-lead lines

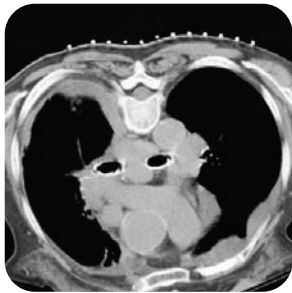


GuideLines®

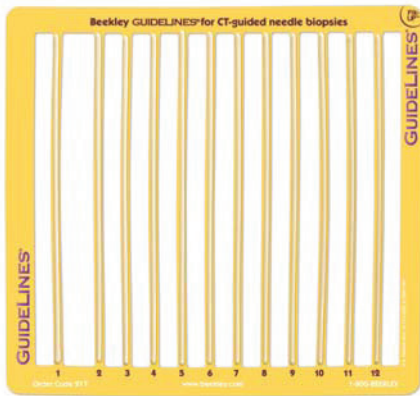
Contents per box: 20

- 4" x 5" grid with seven 2.0 mm diameter non-lead lines
- Perfect for CT-guided biopsies of the neck or other small areas

GuideLines BE1-117



GuideLines® biopsy grid with twelve 2.0 mm diameter non-lead lines



GuideLines®

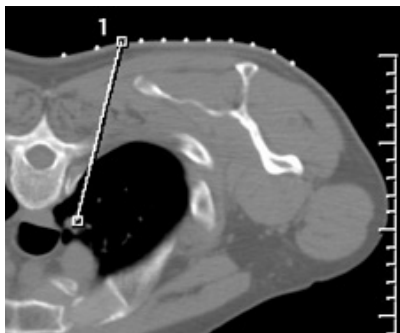
Contents per box: 15

- 7" x 7.5" grid with twelve 2.0 mm diameter non-lead lines
- Perfect for CT-guided biopsies of the abdomen or other large areas

GuideLines BE1-217



Mark-Through GuideLines® (REF: 219) easily allows ink to instantly transfer to skin



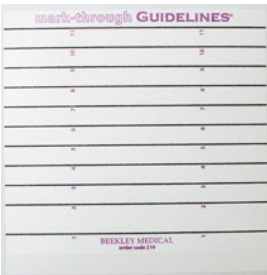
Mark-Through GuideLines® all-over adhesive backing hugs skin without buckling for easy correlation of entry site to image

Mark-Through GuideLines®

Contents per box: 15

- 6.25" (15.88 cm) x 6.75" (17.15 cm) biopsy grid
- Ideal for CT-guided biopsies, drainage procedures and pain management injections

Mark-Through GuideLines BE1-219

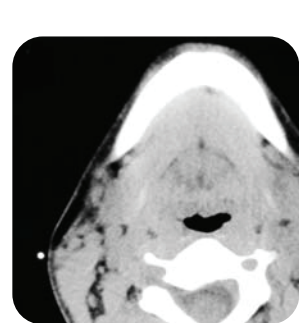




# CT Simulation Skin Markers

Achieve bright, artifact-free imaging with Beekley Medical's CT-SPOTS® non-lead pellets, lines, and crosshairs for more accurate CT treatment planning calculations.

Beekley Medical's CT-SPOTS® skin markers are ideal for marking a variety of specific points of reference and other areas of concern. Beekley Medical's unique non-lead pellets, crosshairs and lines image brightly during simulation without streaking or artifact and guaranteed not to move or shift during positioning.



## CT-SPOT® pellet

- Contents per box: 85
- 2.3 mm non-lead pellet
  - Perfect for 3-point set-ups and isocenters

CT-SPOT® pellet BE1-119



## CT-SPOT® pellet

- Contents per box: 85
- 4.0 mm non-lead pellet
  - Perfect for 3-point set-ups and isocenters

CT-SPOT® pellet BE1-120



## CT-SPOT® crosshair

- Contents per box: 50
- 2.0 cm x 2.0 cm non-lead crosshair
  - Perfect for 3-point set-ups, isocenters and field borders

CT-SPOT® crosshair BE1-123



## CT-SPOT® line

- Contents per box: 320 cm
- 2.0 mm diameter non-lead line
  - Perfect for marking scars and field borders

CT-SPOT® line BE1-118

# MRI

Beekley MR-Spots® image on all MRI sequences so that areas of interest are clearly identified on the scan. MR-Spots® tubes provide a sharp, distinct image on film while MR-Spots® packets help reduce marker indentation.

## Brava® Skin Markers for Breast MR

Achieve exact localization and precise communication of areas of interest in breast MRI with Beekley Medical's new Brava® family of skin markers.

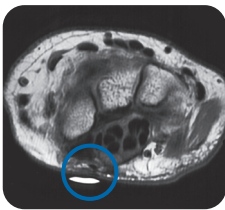
Brava® skin markers are indentation-free and provide a bright, consistent image on every sequence. Designed specifically for Breast MRI, Brava® features a soft, feminine design that can help alleviate patient anxiety and is available in 4 sizes and 2 varieties of skin markers. Whether your marker needs to image on 2 or 9 slices, there is a Brava® skin marker for all your Breast MRI needs.



### MR-Spots® (122)

- Contents per box: 40
- 1.5 cm Radiance filled tube
- Perfect for extremities, soft tissue masses and breast MRI

MR-Spots BE1-122



### MR-Spots® (185)

- Contents per box: 40
- 1.75 cm Radiance filled packet
- Perfect for extremities, soft tissue masses, and breast MRI
- Designed for optimum patient comfort.

MR-Spots BE1-185



### MR-Spots® (184)

- Contents per box: 40
- 5.0 cm Radiance filled packet
- Perfect for thoracic spines and larger areas of interest
- Designed for optimum patient comfort

MR-Spots BE1-184



## Ortho-SPOTS® Skin Markers for MRI

Provide a precise, indentation-free, landmark on every sequence in orthopaedic MR imaging.

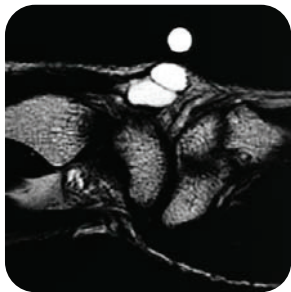
Ortho-SPOTS® MRI Skin Markers small (.75cm) size and low profile clearly identify areas of interest without distorting pathology or overwhelming the area to be imaged, making them the ideal choice for marking extremities and for use in pediatrics.

Order code: 186  
Contents per box: 40

- .75 cm Radiance™ filled packet
- Perfect for orthopaedic imaging
- Designed for optimum patient comfort

Ortho-SPOTS BE1-186

# Pinpoint® Markers



## PinPoint® for Small Field of View Imaging

Communicate a patient's point of pain or specifically identifiable area of interest on every image with Beekley Medical's PinPoint® for small field of view imaging. PinPoint® identifies with precision and without any distortion to pathology.

PinPoint® is the perfect choice whenever a skin marker is needed for precise localization. When the patient says "It hurts right here!", use PinPoint®.

Contents per box: 40

- 6 mm Radiance™ filled inner diameter
- Perfect for small field of view imaging in MRI
- Precisely identifies an exact area of interest in MR

PinPoint for Small Field of View Imaging BE1-187

## PinPoint® for Image Registration

PinPoint® for Image Registration is a breakthrough fiducial marker with a unique conical design to assist in accurate image registration under both CT and MRI

Contents per box: 30

- Perfect for image registration performed under CT and MRI
- Conical design with a 1.27 mm diameter center hole

PinPoint for Image Registration BE1-128



## MR-Spots® (121)

- Contents per box: 40
- 3 cm Radiance filled tube perfect for thoracic spines and larger areas of interest

MR-Spots BE1-121



## Sticks just right adhesive

All Beekley SPOTS® Skin Markers are made with medical grade adhesives and unique materials that flex with the patient. They stay right on the mark without shifting or moving for accurate, reliable images the first time, every time, yet remove without pulling or tearing patients' skin. When your markers need to stick, Beekley Medical's stick just right.



# AromaTabs™

Help reduce patient anxiety with scented, self adhesive tabs for MRI.

AromaTabs™ can help to calm and distract anxious MRI patients\*. Used alone or in combination with medication or other relaxation techniques, AromaTabs™ can help more patients complete their exam and reduce costs associated with non-recoverable staff and equipment time for your facility.

Choose from two gentle scents made from essential oils; Lavender-Sandalwood and Orange-Peppermint. Both are ideal aroma therapy treatments for anxiety, tension and stress. Orange-peppermint is also known for nausea-reducing benefits.

\*May not be effective on all patients, especially those with extreme anxiety, claustrophobia, or nausea

## Instructions for Use

For best results, apply to patient prior to beginning the exam

### Step 1



Pull a strip of AromaTabs from the dispenser box. Separate one AromaTab by tearing the perforated paper backing between the labels.

### Step 2



Tear packet at MAX SCENT for the full affect of the essential oil OR tear packet at MIN SCENT for a lighter affect of the essential oil.

Using your thumb, press down and hold the self-adhesive label in place on the paper backing. With your other hand, pull and tear the clear cellophane pouch at the preferred NOTCH to expose the scented tab.

### Step 3



Lift the self-adhesive label off the paper backing.

### Step 4



Place self-adhesive label on the patient's upper chest, hip, thigh or other alternate location prior to beginning exam.

## Dual Tear Notch Feature

MAX SCENT and MIN SCENT for a stronger or lighter scent preference.



## Benefits of Cold Treatment After Stereotactic or Ultrasound Core Biopsy a Standard of Care for Patients

Stereotactic core biopsy has become a well-accepted procedure and alternative to the traditional needle-localisation biopsy. Core needle biopsies offer several advantages over surgical (open) biopsies. The core biopsy takes approximately an hour.

Afterwards a patient can resume normal, non-strenuous activities. Once the biopsy is completed, a cold compress and pressure is applied to the area. Since there is disruption of tissue during the biopsy, it can rapidly result in swelling of the tissues and a collection of blood called a haematoma. While this is a normal response to any injury or surgery, an excess of blood and fluids in the tissue means that healing is delayed as the body has to 'recover' as it deals with the collection of blood.

It has become a standard of care in many facilities to immediately apply cold therapy over the dressing of the biopsy site following the procedure to help reduce swelling, redness, pain, bleeding or discharge. Residual pain that can occur as the local anaesthesia wears off is dramatically reduced. Most patients have reported that the procedure involves minimal pain and have been able to recover quickly, and proceed with normal activities within 24 hours.

Many hospitals and clinics that are performing core biopsies have already incorporated cold therapy into their protocol. "We use cold treatment over the biopsy site to reduce the swelling of the breast for our patients", remark Mammographers from Dean Medical Center in Madison, WI., "They really appreciate the care we provide." The industry standard is to apply pressure immediately following the procedure, followed by cold therapy. It is recommended to use cold on and off for 20 minute increments to reduce swelling. Some facilities also apply cold treatment to the site of the needle puncture for a few minutes before the injection of the local anaesthesia. Since some patients are extremely apprehensive and hypersensitive to any pain, this simple precaution avoids the panic often associated with the initial anaesthetic needle puncture of the breast.

Effective cold therapy should draw four times the amount of heat out of tissue to improve healing. What this means is that the product used needs to last longer at an even temperature to allow for effective treatment. Cold therapy products that quickly lose their ability to transfer heat, limit their effectiveness to reduce swelling, produce numbness, and ability to relieve pain.

## Benefits with the Routine Use of Cold Therapy:

- Reduced bruising and bleeding
- Patient comfort and pain relief is assured
- Swelling and healing time is reduced
- Haematoma formation is prevented
- Reduce possible delay of Chemotherapy or Radiation Therapy that would follow a lumpectomy

A unique new product, developed by a breast cancer survivor, is now available from Beekley Corporation. ColdSPOT® is specifically designed for effective cold therapy treatment after a core needle biopsy. It stays in place over the biopsy site with two adhesive side tabs that make it very convenient for patients to resume regular activities and use cold treatment at the same time. The flexible gel contours to the body providing maximum comfort.



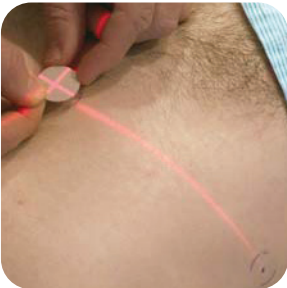
# Radiation Therapy

Save time while improving accuracy and patient satisfaction during treatment planning in both CT and conventional simulation with Beekley Medical's products for radiation therapy.

## PointGuards® Temporary Mark Covers

Ensure accurate day to day reproducibility of set-ups during treatment with Beekley PointGuards®.

Precut clear adhesive covers provide a watertight seal and stay securely in place for up to 4 weeks. Proven to be less irritating to skin than other methods, PointGuards® are quick and easy to use.

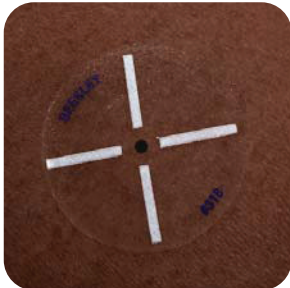


### PointGuards®

Contents per box: 100

- 2.5 cm circular adhesive covers for smaller treatment planning marks

PointGuards BE1-115



### PointGuards® for Darker Skin Tones -

White Crosshair Design

Contents per box: 85

- 2.5 cm circular adhesive covers with crosshair design

PointGuards BE1-318



### PointGuards®

Contents per box: 75

- 1.5 cm x 5.0 cm linear adhesive covers for
- Longer, more linear treatment planning marks

PointGuards BE1-215



### PointGuards®

Contents per box: 100

- 2.5 cm circular adhesive covers for smaller, treatment planning marks
- See-through cover for quicker and more precise placement

PointGuards BE1-315



### PointGuards®

Contents per box: 75

- 1.5 cm x 5.0 cm linear adhesive covers for longer, more linear treatment planning marks
- See-through cover for quicker and more precise placement

PointGuards BE1-316



# Beekley Markers Order Form

Identify and differentiate specific points of reference on treatment sites in conventional simulation and on port films with Beekley Medical's SPOTS® leadfree metallic pellets, arrows and line skin markers.

## Conventional Simulation Skin Markers

		QTY	Contents per Box
X-SPOT®	BE1-101	<input type="text"/>	150
Y-SPOT®	BE1-102	<input type="text"/>	132
Z-SPOT®	BE1-114	<input type="text"/>	40



D-SPOT® arrow	BE1-104	<input type="text"/>	99
V-SPOT® Florals	BE1-603	<input type="text"/>	130
T-SPOT® line	BE1-111	<input type="text"/>	275cm



R-I.D. SPOT®	BE1-113	<input type="text"/>	64
L-I.D. SPOT®	BE1-112	<input type="text"/>	64

## Mammography

O-SPOTS® Light Image™ Florals™	BE1-652	<input type="text"/>	58
--------------------------------	---------	----------------------	----



O-SPOTS® Designed for Digital® Florals™	BE1-752	<input type="text"/>	58
O-SPOTS® Florals™	BE1-609	<input type="text"/>	58
O-SPOTS® Light Image™ Soft 'n Stretchy™ Florals™	BE1-691	<input type="text"/>	55
N-SPOTS® Soft 'n Stretchy Pink	BE1-190	<input type="text"/>	94



N-FREE SPOTS® Florals™	BE1-632	<input type="text"/>	110
N-SPOTS® Florals™	BE1-608	<input type="text"/>	122
N-FREE SPOTS® For Digital Florals™	BE1-732	<input type="text"/>	110
N-SPOTS® Designed for Digital® Soft 'n Stretchy™ Florals™	BE1-790	<input type="text"/>	94

N-FREE SPOTS® Florals™	BE1-653	<input type="text"/>	110
------------------------	---------	----------------------	-----



N-SPOTS® Florals™	BE1-610	<input type="text"/>	122
-------------------	---------	----------------------	-----



Y-SPOTS® Green	BE1-102	<input type="text"/>	132
Y-SPOTS® Florals™	BE1-602	<input type="text"/>	132
V-SPOTS® Designed for Digital® Florals™	BE1-703	<input type="text"/>	130
V-SPOTS® Florals™	BE1-603	<input type="text"/>	130
X-SPOTS® Blue	BE1-101	<input type="text"/>	150
X-SPOTS® Florals™	BE1-601	<input type="text"/>	150
A-SPOTS® Light Image™ Florals™	BE1-651	<input type="text"/>	120



Altus™ Light Image™ Florals™	BE1-654	<input type="text"/>	60
O-SPOTS® Light Image™ Florals™	BE1-652	<input type="text"/>	58
O-SPOTS® Light Image™ Pink	BE1-691	<input type="text"/>	60
A-SPOTS® Designed for Digital® Florals™	BE1-751	<input type="text"/>	120
Altus™ Designed for Digital® Florals™	BE1-754	<input type="text"/>	60



Call Us 1300 132 100  
for a FREE Sample!

Mammography

		QTY	Contents per Box
Altus™ Light Image™ Florals™	BE1-654	<input type="text"/>	60
S-SPOTS® Designed for Digital® Florals™	BE1-750	<input type="text"/>	327cm
S-SPOTS® LI™ Pink	BE1-150	<input type="text"/>	327cm
S-SPOTS® LI™ Florals™	BE1-650	<input type="text"/>	327cm
S-SPOTS® LI™ Soft 'n Stretchy™ Florals™	BE1-677	<input type="text"/>	280cm



S-SPOTS® Pink	BE1-107	<input type="text"/>	363cm
S-SPOTS® Florals™	BE1-607	<input type="text"/>	363cm
Bella Blanket 18cm x 24cm	BE1-310	<input type="text"/>	50

Breast Biopsy

Cradles Needle Localisation Wire Protectors	BE1-309	<input type="text"/>	12
---	---------	----------------------	----



AccuGrid® with 4.65" grid	BE1-300	<input type="text"/>	12
AccuGrid® with 5.65" grid	BE1-302	<input type="text"/>	10
MarginMap™ with 5mm charms	BE1-304	<input type="text"/>	15
MarginMap™ with 10mm charms	BE1-308	<input type="text"/>	15



Core Tainer™	BE1-301	<input type="text"/>	12
ColdSPOTS® Pillows	BE1-502	<input type="text"/>	68
ColdSPOTS®	BE1-500	<input type="text"/>	100
ColdSPOTS® Pillows	BE1-505	<input type="text"/>	50

CT-SCAN

		QTY	Contents per Box
GuideLines	BE1-117	<input type="text"/>	20
GuideLines	BE1-217	<input type="text"/>	15
Mark-Through GuideLines	BE1-219	<input type="text"/>	15
CT-SPOT® pellet	BE1-119	<input type="text"/>	85
CT-SPOT® pellet	BE1-120	<input type="text"/>	85
CT-SPOT® crosshair	BE1-123	<input type="text"/>	50
CT-SPOT® line	BE1-118	<input type="text"/>	320cm
S-SPOT® Pink	BE1-107	<input type="text"/>	363cm
S-SPOT® Florals	BE1-607	<input type="text"/>	363cm

MRI

MR-Spots (185)	BE1-185	<input type="text"/>	40
MR-Spots (122)	BE1-122	<input type="text"/>	40
MR-Spots (184)	BE1-184	<input type="text"/>	40
Ortho-SPOTS	BE1-186	<input type="text"/>	40



Aroma Tabs Orange Peppermint	BE1-371	<input type="text"/>	50
Aroma Tabs Lavender Sandalwood	BE1-370	<input type="text"/>	50
PinPoint for Small Field of View Imaging	BE1-187	<input type="text"/>	40
PinPoint for Image Registration	BE1-128	<input type="text"/>	30
MR-Spots	BE1-121	<input type="text"/>	40

Radiation Therapy

PointGuards Circular	BE1-115	<input type="text"/>	100
PointGuards Linear	BE1-215	<input type="text"/>	75
PointGuards Darker Skin	BE1-318	<input type="text"/>	85
PointGuards Circular See-Through	BE1-315	<input type="text"/>	100
PointGuards Linear See-Through	BE1-316	<input type="text"/>	75

Account Details

Co. Name \_\_\_\_\_

A.C.N / A.B.N. \_\_\_\_\_

Street Address \_\_\_\_\_

Suburb \_\_\_\_\_ State Post Code \_\_\_\_\_

Phone ( ) \_\_\_\_\_

Fax ( ) \_\_\_\_\_

Email \_\_\_\_\_

Order Details

Date \_\_\_\_ / \_\_\_\_ / \_\_\_\_

Purchase order No. \_\_\_\_\_

Orderers Full Name \_\_\_\_\_

Orderers Position \_\_\_\_\_

Authorised Signature \_\_\_\_\_

Email \_\_\_\_\_

Website: [imagingsol.com.au](http://imagingsol.com.au)  
Call Us: 1300 132 100

Email: [info@imagingsol.com.au](mailto:info@imagingsol.com.au)  
Fax Order to: 1300 721 850

your single source supplier









*Selenia*<sup>®</sup>  
24cm x 29cm with HTC<sup>®</sup> technology



**Australia**

PO Box 3225 Loganholme QLD 4129 Australia  
Phone: 1300 132 100 Fax: 1300 721 850

**New Zealand**

Phone: 0800 723 776 Fax: +61 7 3209 9812

**Customer Service Hotlines**

Product Orders: 1300 132 100  
Technical Service: 1800 300 100

[www.imagingsol.com.au](http://www.imagingsol.com.au) [info@imagingsol.com.au](mailto:info@imagingsol.com.au)

© Imaging Solutions 2021 - Version 0921